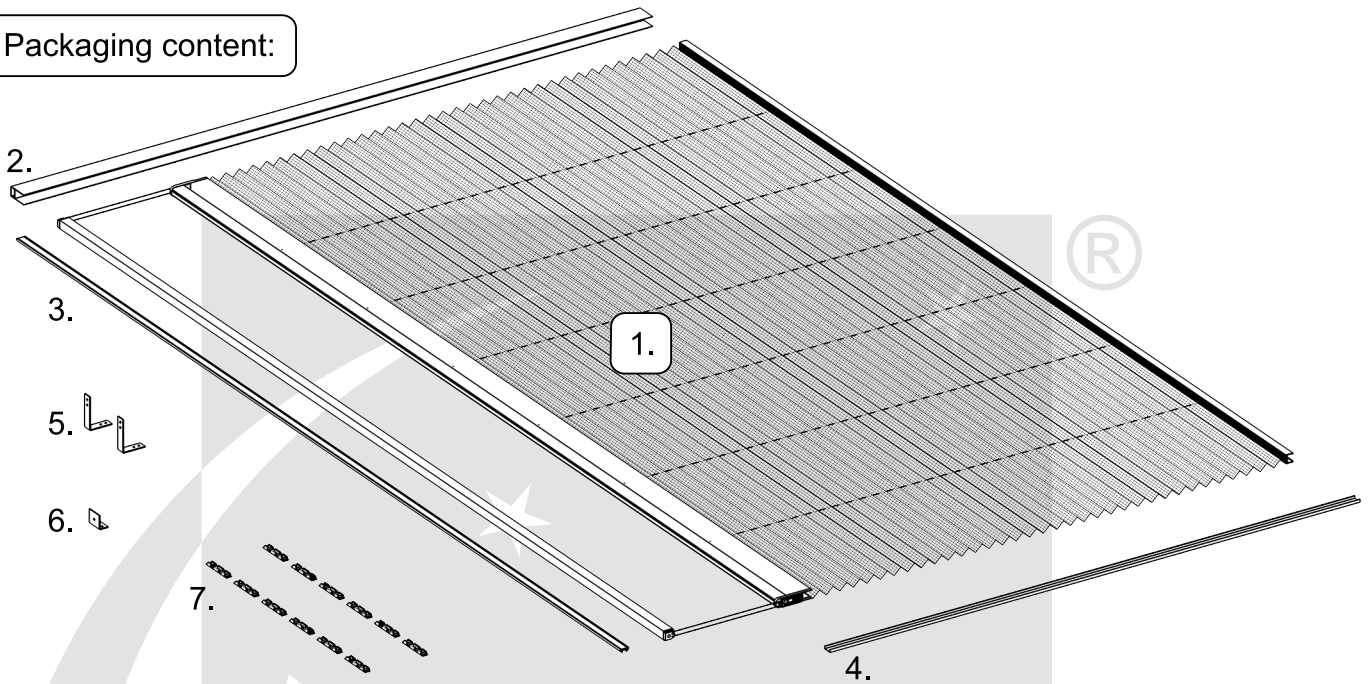




Installation instructions

Pleated insect screen - installation under an external roller shutter on PPMO53 guides

Packaging content:



		<p>1. Package MPH. 2. Top guide channel. 3. Covering profile – with magnetic tape. 4. Bottom guide channel – 3 variants (optional) 5. Installation angle irons 6. Aluminium angle iron – T30. 7. Click-fits.</p>

Measurement.

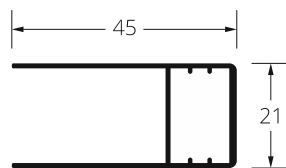
Width:

= total width of the roller shutter minus 53 mm

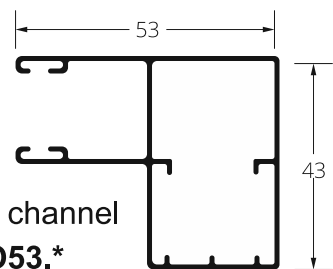
Height:

= total roller shutter height minus box height.

Dimensions of guide channels:



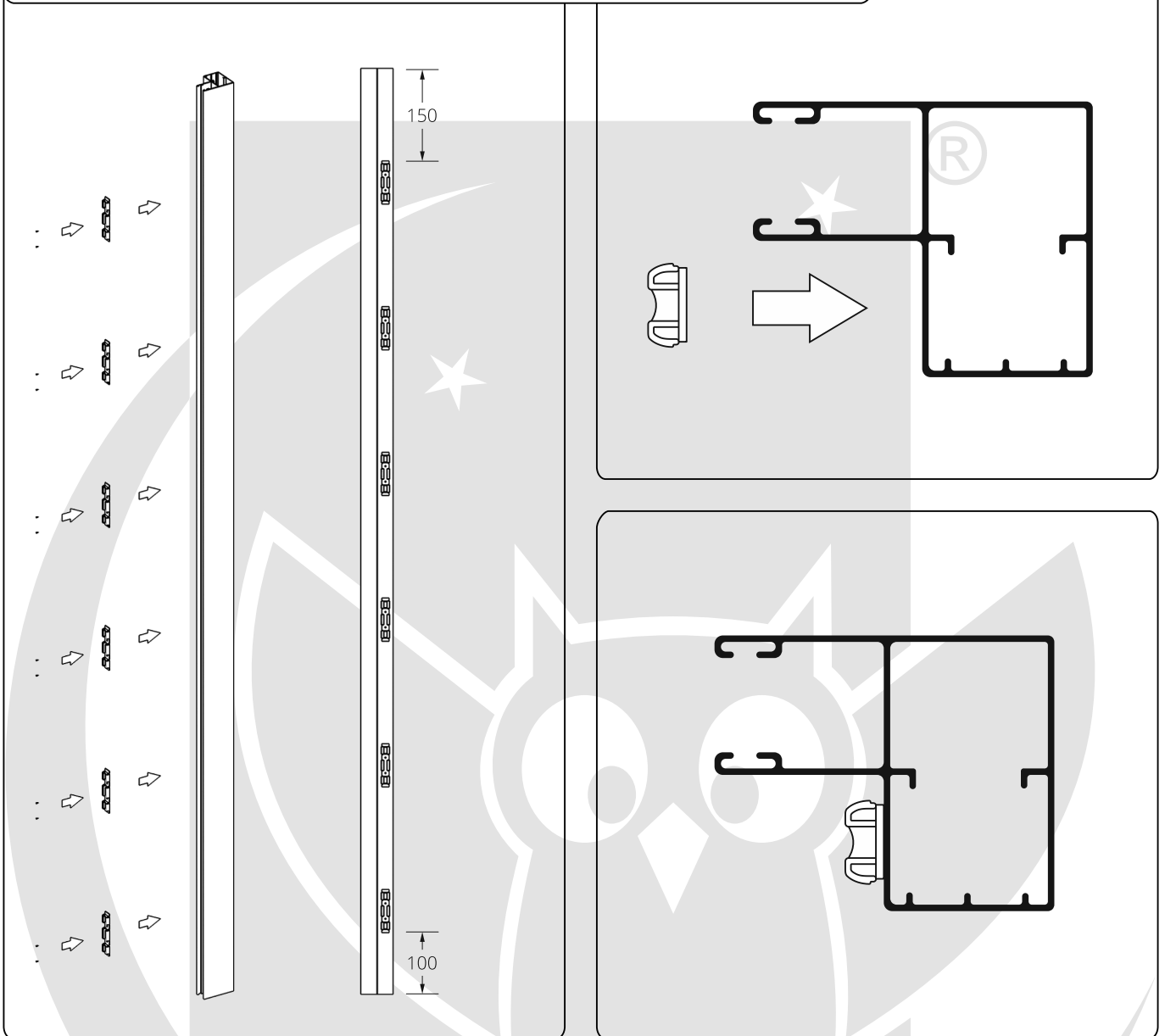
Top Guide channel.



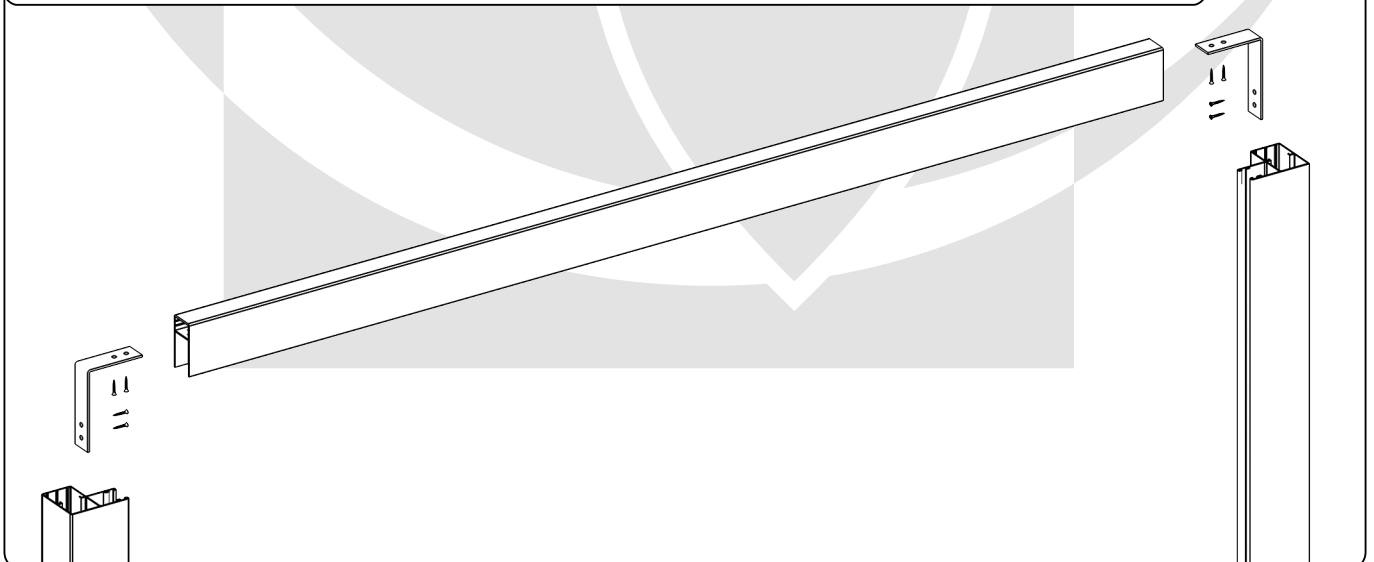
Guide channel PPMO53.*

PPMO53 guides - are not included to the insect screen, they are parts of the external roller shutter.

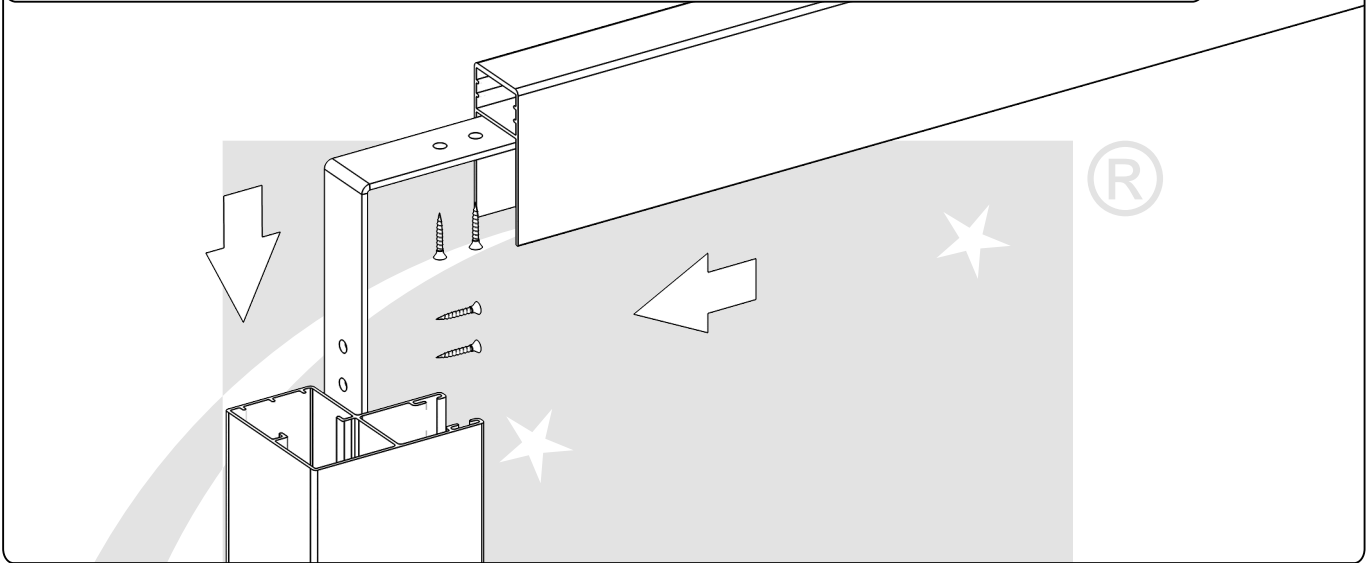
Installation of click-fits on PPMO53 guides (6 click-fits on each guide).



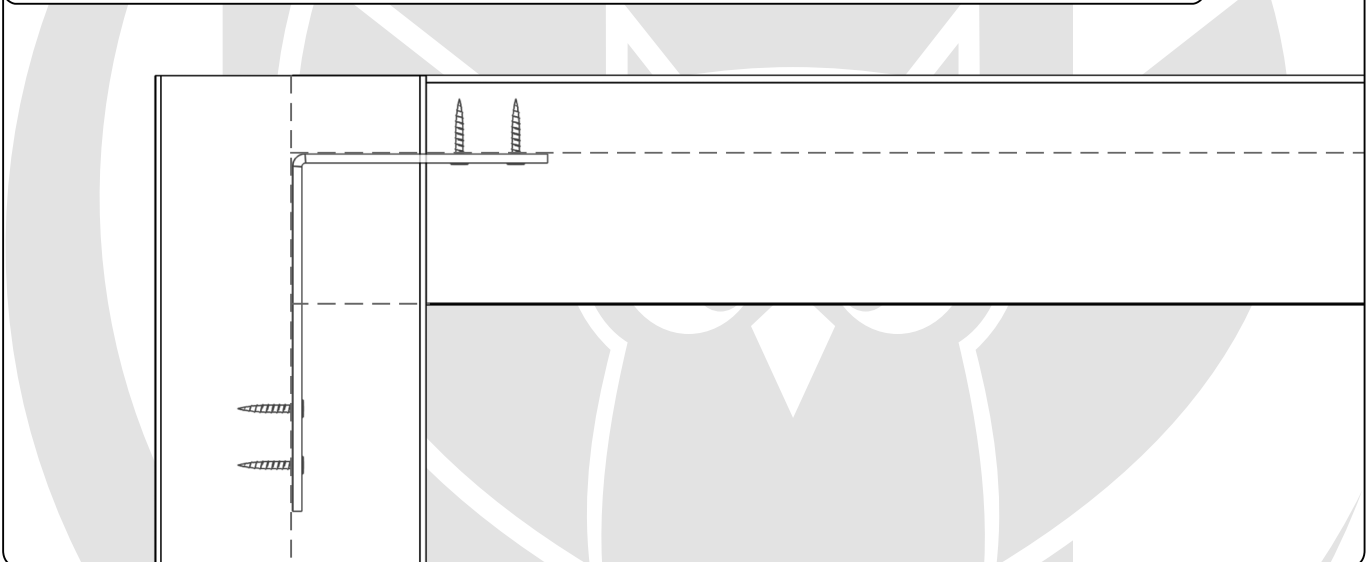
Installation of the top guide and PPMO53 guides with using installation angle irons.



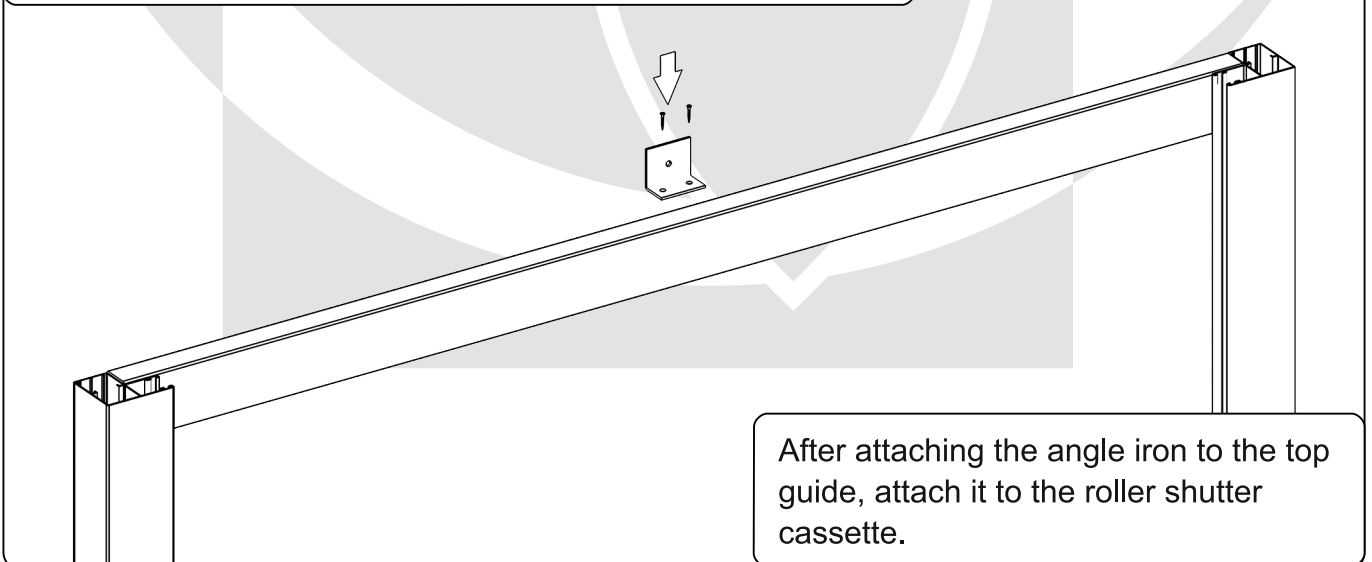
Installation of the top guide and PPMO53 guides with using installation angle irons.



Installation of the top guide and PPMO53 guides with using installation angle irons.

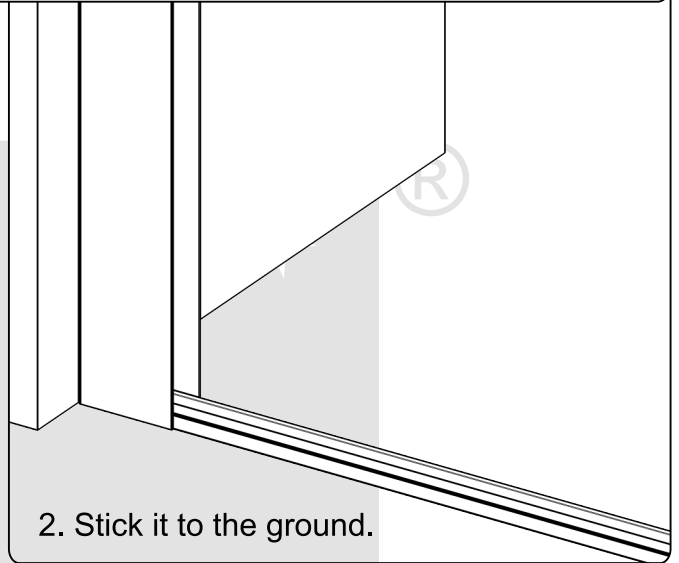
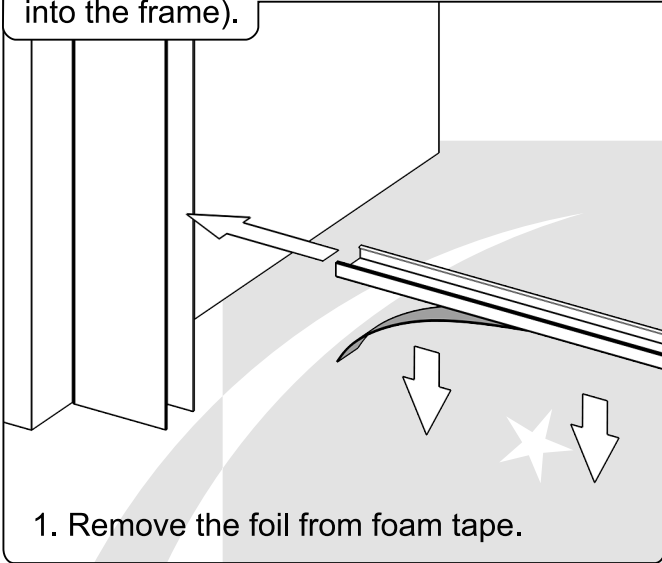


Installation of the KT 30 aluminum angle iron on the top guide.

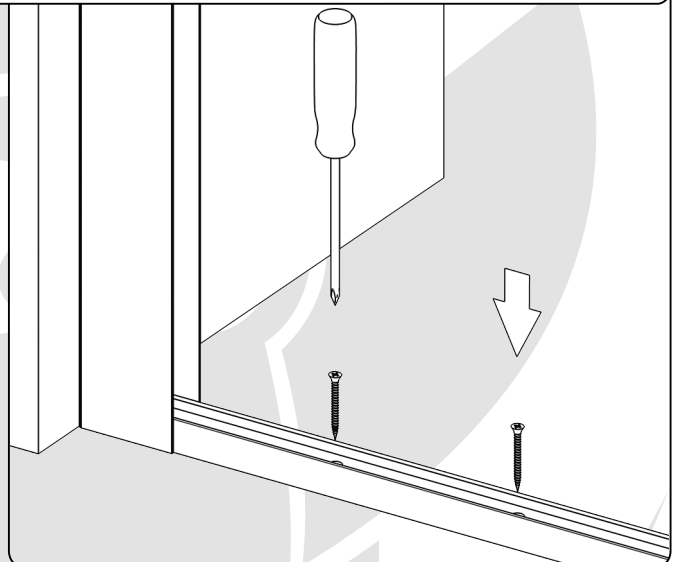
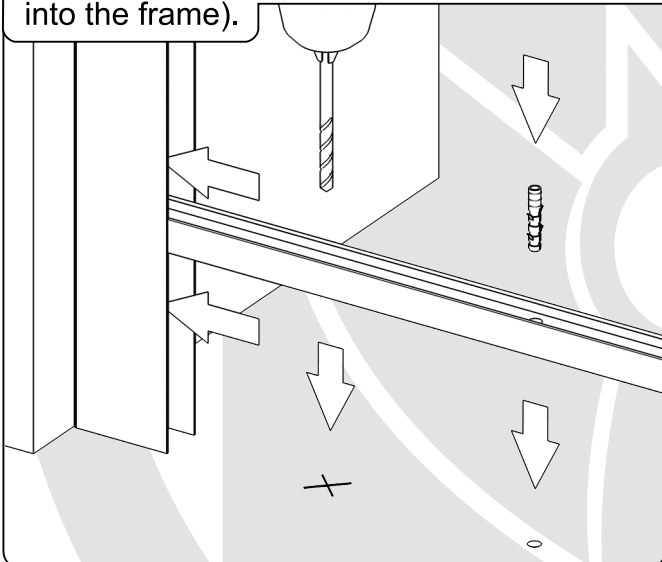


After attaching the angle iron to the top guide, attach it to the roller shutter cassette.

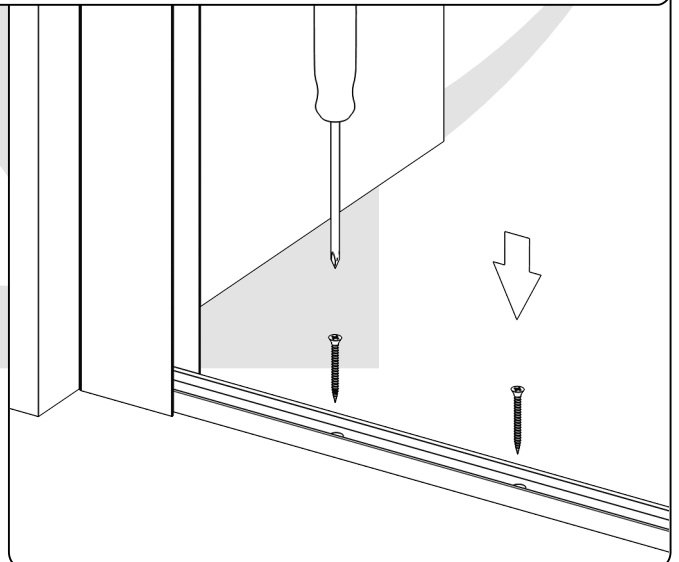
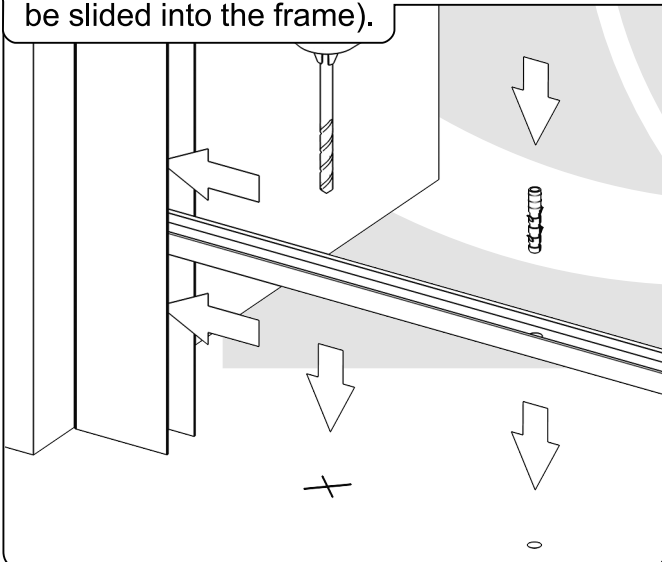
Installation of the glued bottom profile (during the assembly of the profile it should be slid into the frame).



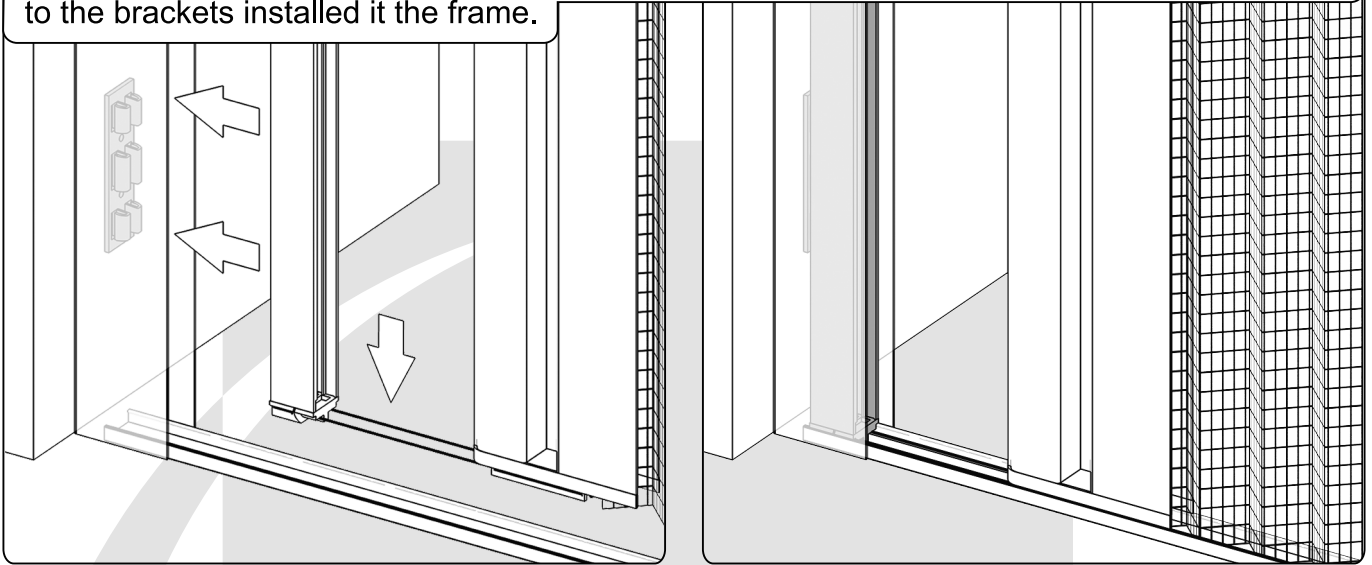
Installation of the screwed bottom profile (during the assembly of the profile it should be slid into the frame).



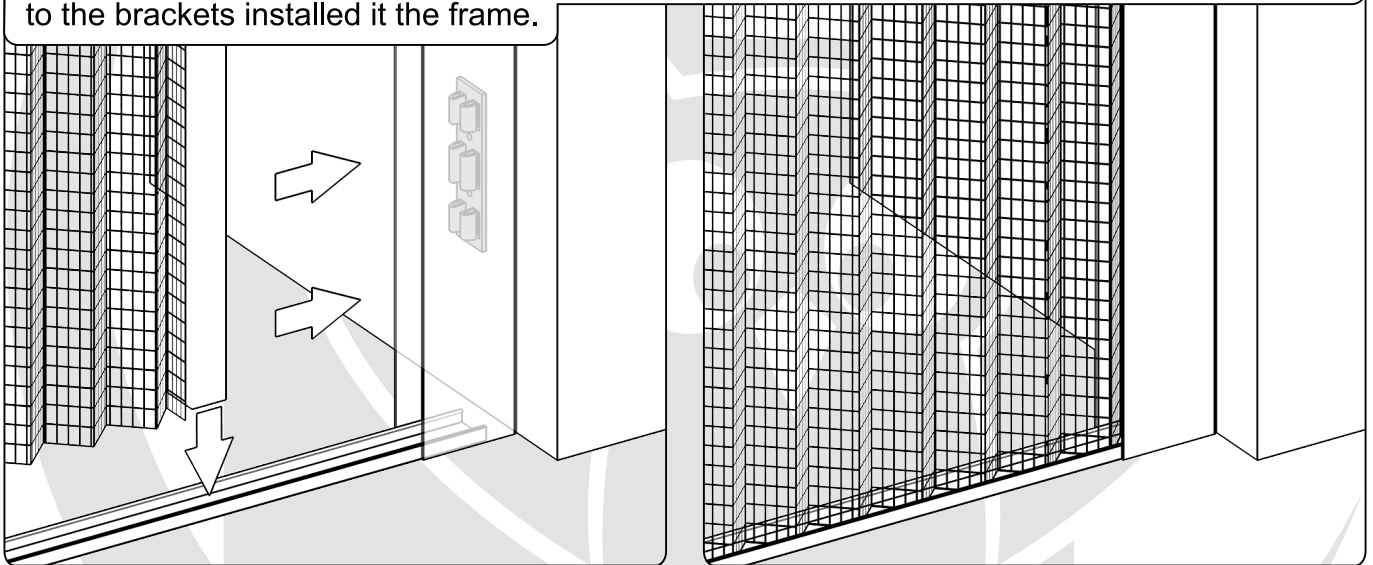
Installation of the slanting screwed bottom profile (during the assembly of the profile it should be slid into the frame).



Installation of tensioning profile – after placing in the bottom guide channel, slide it and click it to the brackets installed in the frame.



Installation of MPH package – after placing in the bottom guide channel, slide it and click it to the brackets installed in the frame.



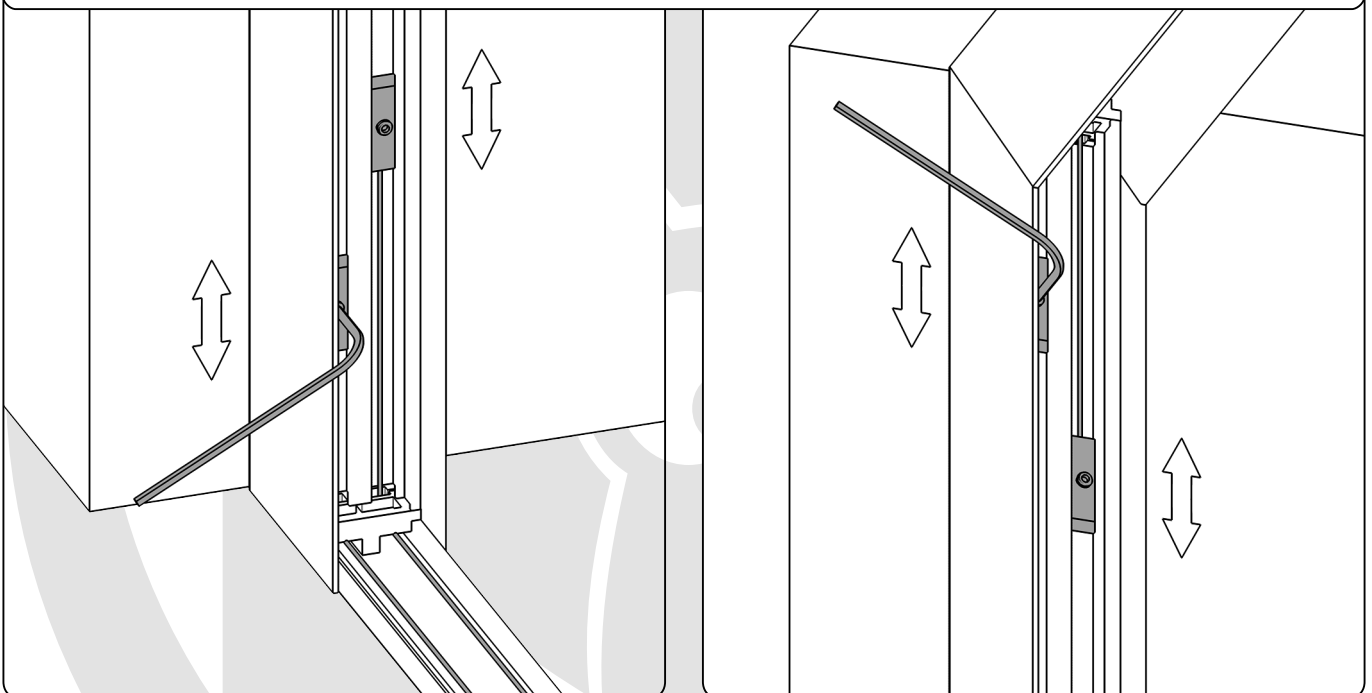
Adjustment of the strings.

After installation of tensioning profile and MPH package you should adjust the tension of the strings by moving the pcv string endings up or down. When it's completed, fasten the screw with hex key.

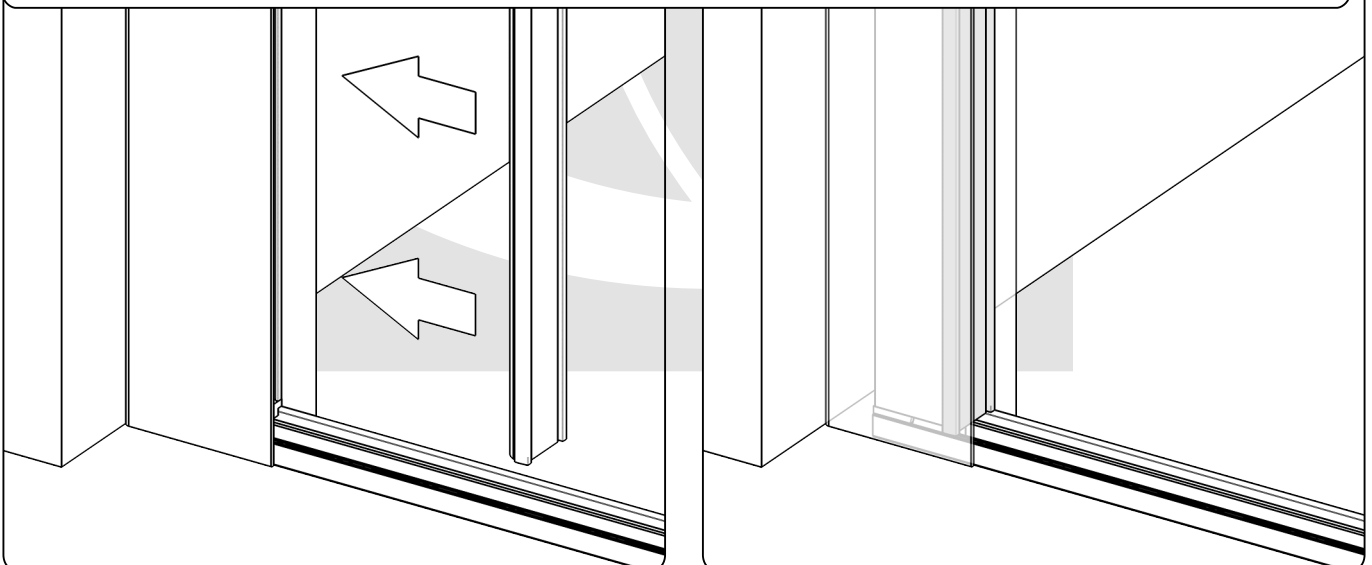
The strings mustn't be tensed too much because it may cause the damage of the insect screen. The whole process of tensioning the strings should be done in a gentle way.

If necessary, you may cut the strings and tie them again.

After preliminary adjustment of the strings, you should check if the tension is correct by opening and closing the insect screen. If necessary adjust the tension again.



Installation of covering profile – after adjustment of the strings place it on the tensioning profile.





Fart Produkt Sp. z o. o. Sp. k.
ul. Towarowa 3, 87-100 Toruń
tel. +48 56 623 55 77
e-mail: export@fartprodukt.pl
www.fartprodukt.pl